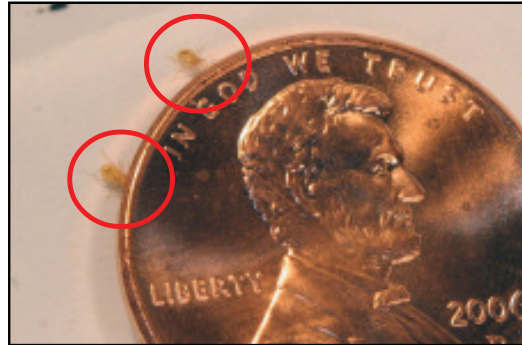




Recognizing Bed Bugs



Adult bed bug (1/4 inch in length).



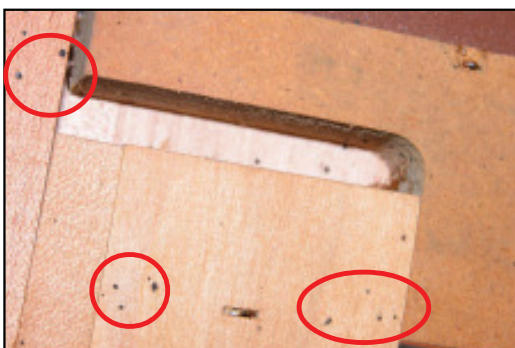
Newly hatched bed bug nymphs are about the size of a letter on a penny.



Adult bed bug on mattress seam.



Bed bugs, nymphs, and fecal spotting on box springs seam (headboard end).



Bed bug fecal spots (little black spots) on back of headboard.



Bed bugs, fecal spots, and eggs (white dots) on back of upholstered headboard.



Recognizing Bed Bugs



Heavy bed bug evidence on back of headboard.



Heavy bed bug evidence on back of headboard.



Bed bug eggs on underside of box springs dust cover.



Cast skins on box springs (shell left behind from bed bugs molting into larger stage).



Bed bugs and fecal spots under paint chip on wall.



Blood spots left by bed bugs on a bed skirt.